

A TWIST ON CLASSIC

EUROPEAN ELEGANCE MEETS COASTAL CHARACTER

BY NANCY BALDWIN | PHOTOGRAPHY BY HOLGER OBENAU

For designers Fran DeLeo and Mark Fletcher, partners at DeLeo & Fletcher Design, the residence in Westlake was an intriguing project. The architect's traditional French design was a nod to classic heritage, yet casual elements provided a provincial air. It was clear that a variety of influences were at work.

"The owners wanted a fresh take on traditional," says DeLeo.

Involved in the project from the start, she worked closely with the architect and Simmons Estate Homes to capture the eclectic vision of the owners. The home's elevation and architectural plan were crafted to reflect and engage the surrounding natural environment while maintaining time-honored appeal.

"We are a full-service interior design and interior architectural firm. We are the liaison for our clients, assisting them through the entire process. We work directly with our client's architect, builder and contractors to ensure a cohesive look.

Our process is fully collaborative from beginning to end, with a team approach," DeLeo says.

The mission was to blend the owners' diverse preferences for design while creating a family-friendly environment. The husband enjoyed the classic, timeless look of traditional architecture and décor, while the wife wanted a touch of transitional elements incorporated to the architecture and furnishings.

"She loves things to be current, up to date, with beautiful pops of color. She wanted a coastal palette and for the home to be lively and fun," says DeLeo.

As a result, both the exterior and interior of the home were designed to reflect the couple's priorities. Although the lines of the home are classic French, a white limestone facade adds timeless character and blends with the natural ambience of the forested lot. Charcoal metal accents and a slate roof add to the classic yet casual look.

At the rear of the lot, a spar-



The architect's traditional French design was a nod to classic heritage, yet casual elements provided a provincial air.

A collected mix of diverse accessories and textured fabrics in a coastal palette enlivens the great room. The sofa from Century Furniture is covered in an easy to maintain crushed velvet fabric.



cluding swimming pool is nestled among the trees. This key focal point provides a dramatic view from all major living areas. The designers' primary focus was taking advantage of the landscape and creating a dynamic relationship between the indoor and outdoor living environments.

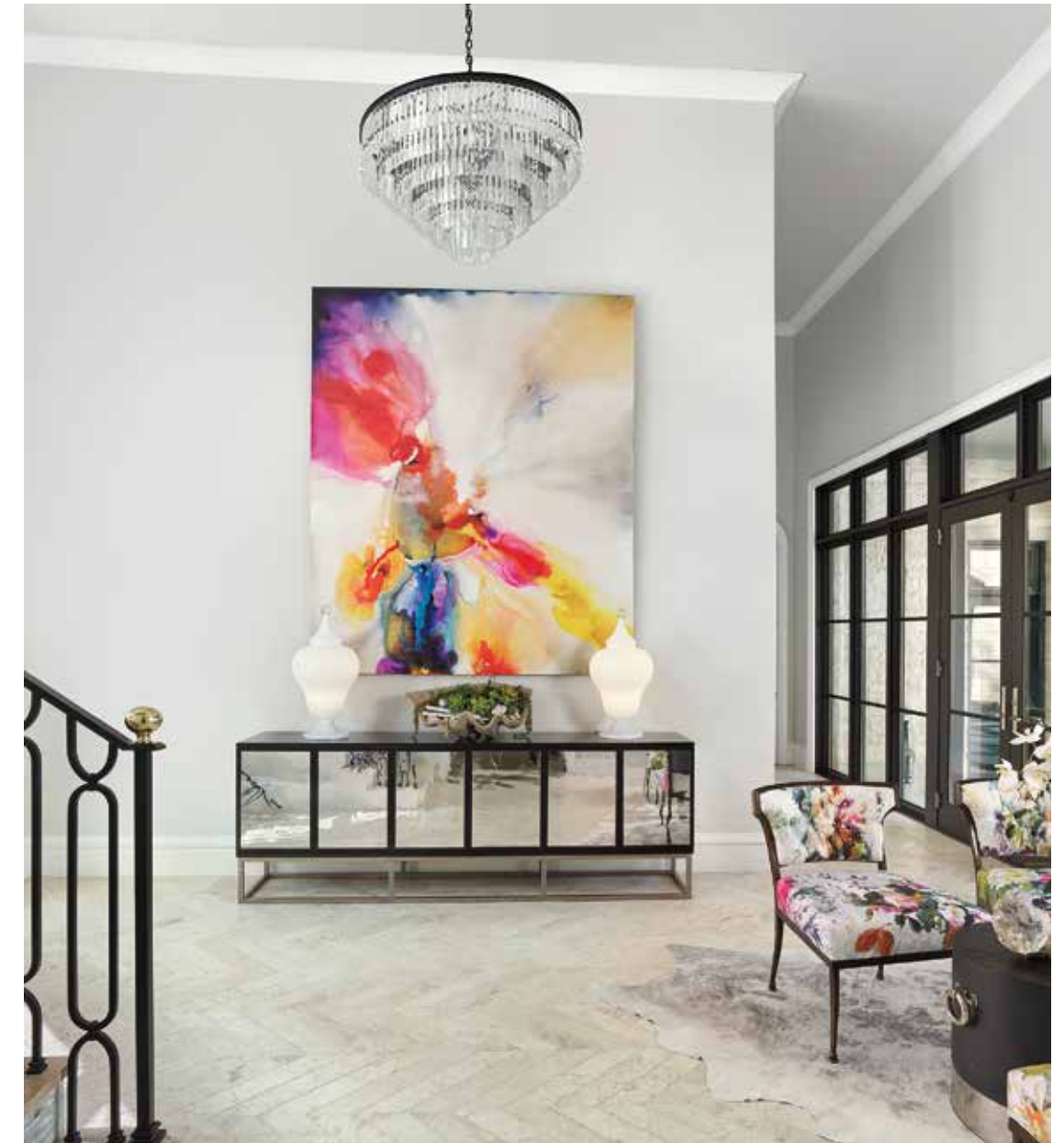
Throughout the home, traditional elements draw attention to its inheritance. Graceful arches, coffered ceilings, tall columns, ironwork and paneled cabinetry form the foundation of the design. Carefully mixing modern touches and traditional furnishings adds warmth and sophistication.

Weathered and coastal elements integrate with the traditional, both in construction and furnishings. White European oak floors throughout the home have a soft gray wash. Built-in desks and cabinetry in the study and media room are sandblasted alder finished with a wire brush technique. Driftwood beams in the living areas and a planked barn door in the media room add rustic charm. Juxtaposed with these are colorful fabrics.

Rather than a coordinated mix of accessories, Fletcher sought to embellish the residence with a diverse mix of classic and organic accents. Emerald green and white Chinese ginger jars sit adjacent to white coral and gold memento boxes on shelves in the great room.

"We're into a collected look, where every piece has a story," says Fletcher.

The eclecticism extends to lighting and metallic accents. A contemporary pink crystal chandelier hangs in her closet, while a smoky charcoal-colored



Above: In the entry, commissioned art from Phoenix Art Gallery in bright watercolor hues adds drama above a mirrored sideboard from Old Biscayne. **Opposite:** At the rear of the lot, a sparkling swimming pool is nestled among the trees. The designers' primary focus was taking advantage of the landscape and creating a dynamic relationship between the indoor and outdoor living environments.

industrial fixture draws attention in the study. "We like mixing different metal finishes throughout the details. We have touches of dark iron, soft gold, and brushed and polished nickel accenting throughout the home," Fletcher says.

Bold, contemporary artwork adds unexpected color to hallways and living areas. In the entry, splashes of bright hues

accent a towering painting from Phoenix Art Group, a contrast to a lofty vintage mirror nearby. Other priorities dictated fabric and finish selections for the home. With three small children, the owners sought durable child- and pet-friendly furnishings.

"The family often entertains so we wanted to make sure the surfaces and materials allowed a carefree, luxurious yet livable lifestyle," says DeLeo.



Dining chairs and barstools are covered in performance fabrics from Duralee Fabrics, Perennials and Robert Allen. A contemporary painting, *Ocean Beach*, by artist Justin Gaffrey hangs in the hall to the media room.



The eye-catching kitchen backsplash is custom Italian glass and natural marble by Materials Marketing. Countertops are Calacatta Borghini quartz, providing carefree everyday living.



Left: A stately upholstered bed sits next to a vintage armoire inherited from the husband's family. Artwork above the bed, commissioned from Justin Gaffrey, depicts a nest with three blue eggs, representing the owners' three children. **Above:** Elegant bands of interlocking ribbons feature white thassos marble and luminous natural white rivershell from the Claridges collection from Artistic Tile to create the focal wall behind the tub.

Chairs flanking the dining table are covered in performance Perennials fabric and Robert Allen faux leather. Nailhead trim adds a classic touch. DeLeo used a Calacatta Borghini quartz on the kitchen countertops to allow for everyday mishaps without worry. The custom glass and natural marble backsplash provides an artistic, graphic touch above the Wolf range.

A casual, traditional home, the residence is both relaxed and classic, just right for a modern family.

"They're new traditionalists," says DeLeo. ➡

DELEO & FLETCHER DESIGN
1703 E. Levee St.
Dallas, TX 75207
214-231-6260
deleofletcherdesign.com

SIMMONS ESTATE HOMES
3110 W Southlake Blvd # 100
Southlake, TX 76092
817-329-0207
simmonsestatehomes.com

Nancy Baldwin is a Dallas-based freelance writer and editor. Contact her at baldwinwriter@gmail.com.